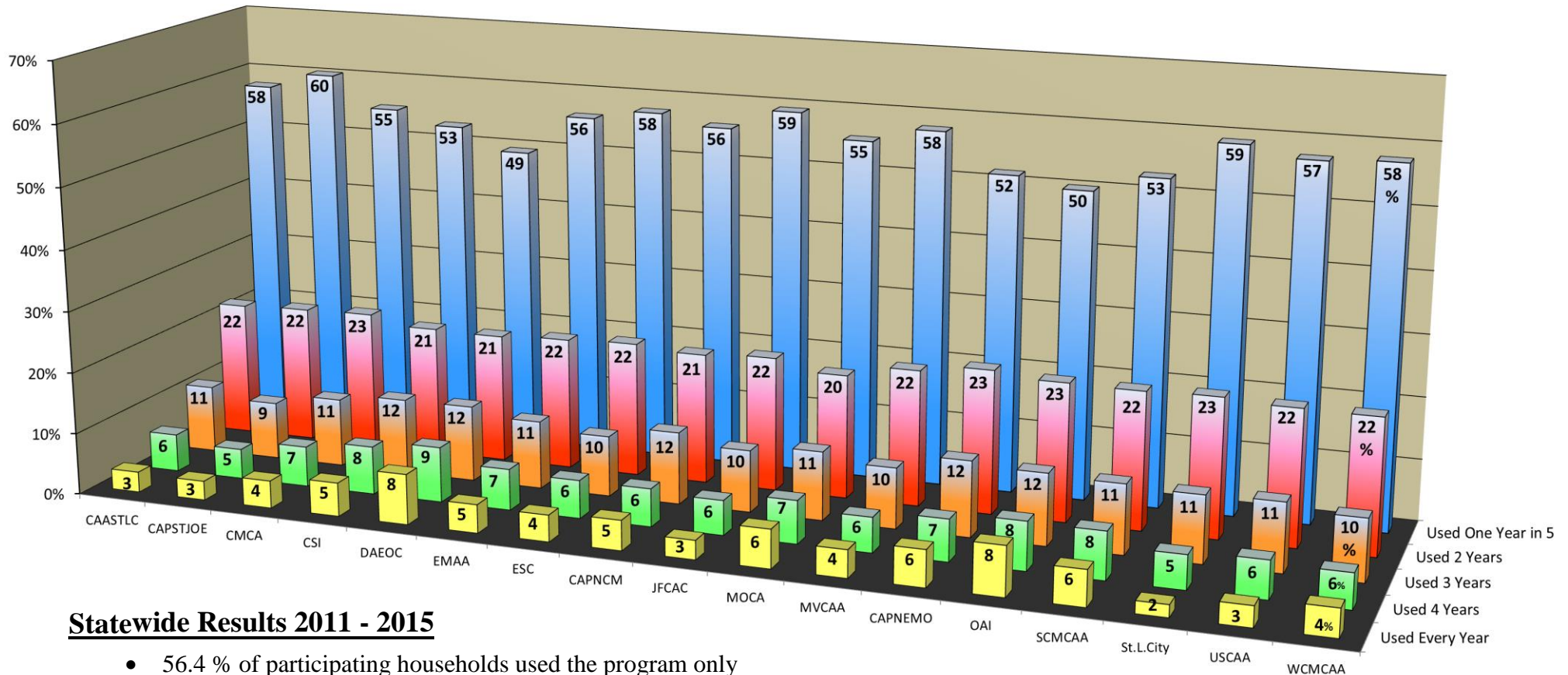


Frequency of Participants' Annual Use of the LIHEAP/ECIP Program in Missouri Over 5 years -- FFY11 through FFY15

By Agency - As Recorded in Missouri's CAA MIS Client Database

(OACAC and NECAC have only 4 years in the MIS and are not included here.)



Statewide Results 2011 - 2015

- 56.4 % of participating households used the program only one year in the five year period.
- 22.0 % used the program in two of the five years
- 10.9 % used the program in three of the five years.
- 6.4 % used the program in four of the five years.
- ONLY 4.2 % used the program all five years, and nearly three-quarters of those were elderly, disabled, or had young children in the household.

Each column represents a percent of the total unduplicated households at that agency who used the ECIP program during the five year period.

The number on each column is the percent of HHs in that category.