

Head Start
Early Head Start

ANNUAL REPORT 2021



SCMCAA

South Central Missouri Community Action Agency is a Community Action Agency serving individuals and families in the counties of Butler, Carter, Dent, Reynolds, Ripley, Shannon, and Wayne. Early Head Start and Head Start services are offered in all seven counties.

Goals



Improve
Communication



Community
Outreach



Support for
Staff



Services for
Families

Head Start Mission

Healthy families are important to the development that occurs from conception throughout life. At Head Start, we build on families' strengths by inspiring self-worth and motivating success.

Our programs provide children, families, and communities with the support, learning opportunities and resources necessary for healthy development.

SCMCAA Vision

Our vision is that all families are self-reliant and have support systems in their communities.

Our vision is that communities invest in their people, realizing that human investment reaps the greatest returns.

Our vision as an agency is to end poverty – one family at a time.

SCMCAA Head Start and Early Head Start

The goal of SCMCAA Head Start and Early Head Start is to provide the best educational opportunities for children so they will be prepared for school and become a lifelong learner.

In 2020-2021 we were funded to serve 512 children in a seven county service area: Butler, Carter, Dent, Reynolds, Ripley, Shannon and Wayne. We operate 12 HS/EHS centers. Various classroom options are available depending on parent preference. Transportation is available at some Head Start locations. Two meals and one snack are provided each day.

All Early Head Start classrooms and one Head Start classroom operate 48 weeks per year and are full week and full day. 53% of our Head Start classrooms are full day/full week with the remaining classrooms attending full day, four days a week.

In all classrooms, children are provided with a high quality early learning environment filled with exciting developmentally appropriate educational activities to increase their cognitive and creative skills, as well as opportunities for expanding their physical and social development. Children are screened and assessed throughout the year to track their on-going development and referred for any additional services if needed.

Head Start Program Performance Standards mandate that all Head Start teachers have no less than an AA degree in Early Childhood Development and Early Head Start teachers have a minimum of a Child Development Associate (CDA).

We encourage parents/guardians to become involved in their child's education and recognize their important role as their child's first and most important teacher.



Eligible Children Served

The program serves children in the counties of Butler, Carter, Dent, Reynolds, Ripley, Shannon, and Wayne in South Central Missouri. As of April 2020, our service area includes a population of 107,474 residents.

Counties Served	Total est. population as of July 1, 2021	% of population under 5	% of persons living in Poverty	% of low income children served
Butler	42130	6.1%	21.8%	51%
Carter	5202	6.3%	22.6%	76%
Dent	14421	6.0%	20.3%	40%
Reynolds	6096	4.9%	20.3%	51%
Ripley	10679	5.7%	23.5%	68%
Shannon	7031	5.5%	22.6%	35%
Wayne	10974	5.0%	23.3%	32%

Sources: <https://www.census.gov/data>

Head Start

Our Head Start program served **27.5%** of income-eligible preschool children in Butler County, **52.7%** in Carter County, **23.9%** in Dent County, **33.0%** in Reynolds County, **42.6%** in Ripley County, **22.9%** in Shannon County, and **16.4%** in Wayne County. This is the equivalent of a total of **29.1%** of the income-eligible preschool children in all seven counties.

Early Head Start

Our Early Head Start program served **28.7%** of the income-eligible children in Butler County, **12.2%** in Carter County, and **16.5%** in Dent County. This is the equivalent of a total of **16.2%** of the income-eligible children in those three counties.

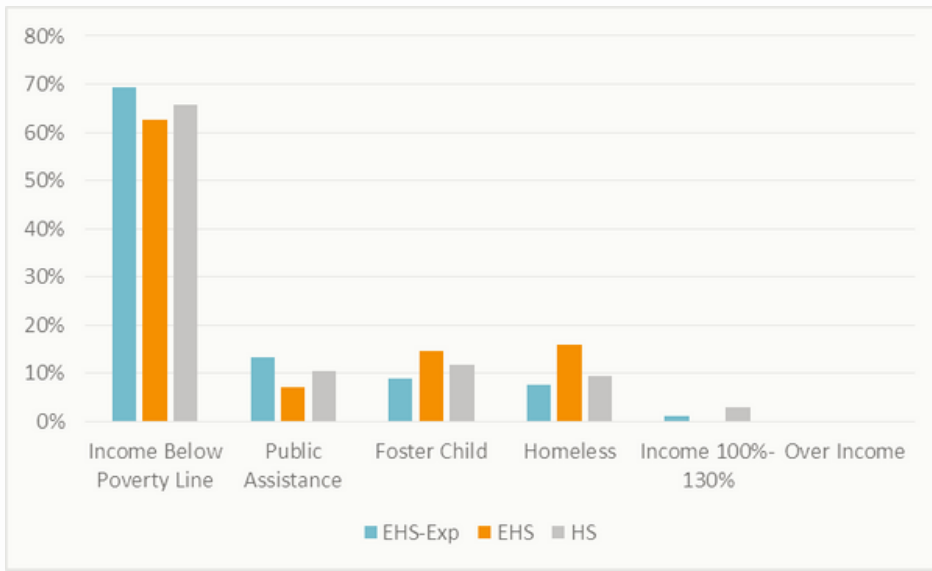
Early Head Start Expansion

Our Early Head Start Expansion program served **12.2%** of the income-eligible children in Carter County, **18.1%** in Reynolds County, **25.2%** in Ripley County, **12.6%** in Shannon County, and **15.6%** in Wayne County. This is the equivalent of a total of **7.1%** of the income-eligible children in those five counties.

Eligibility & Enrollment

Our goal is to "Ensure Eligibility, Recruitment, Selection, Enrollment, and Attendance (ERSEA) systems are in place to enroll the neediest families in a timely manner and maintain full enrollment throughout the program year."

Eligibility Status



Overall Totals

- 65% income below poverty
- 10% Public Assistance
- 12% Foster Child
- 11% Homeless
- 2% Income 100% - 130%
- 0% Over Income

Enrolled Children and Pregnant Women

HS

Funded 304

Cumulative 352

EHS

Funded 128

Cumulative 175

Pregnant Women

Funded 8

Cumulative 9

EHS-Exp

Funded 72

Cumulative 91

Average Monthly Enrollment

100%
HS

100%
EHS

100%
EHS
Exp

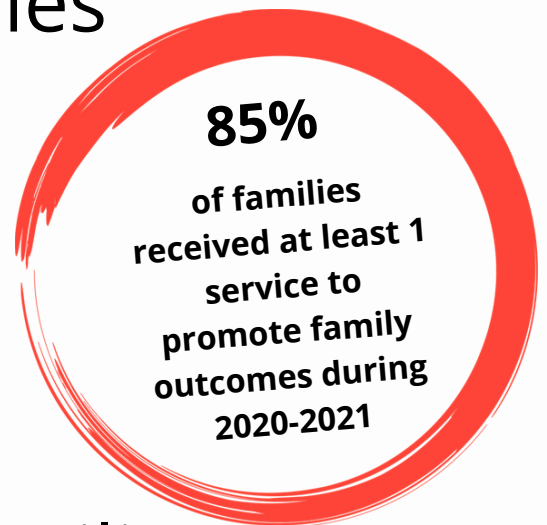
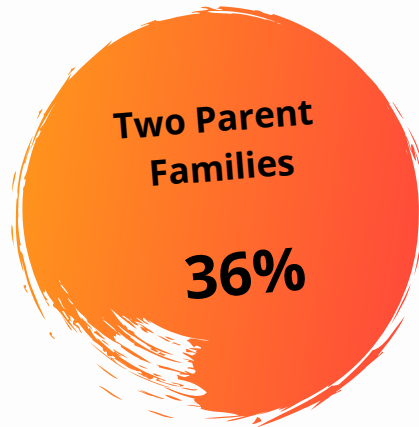
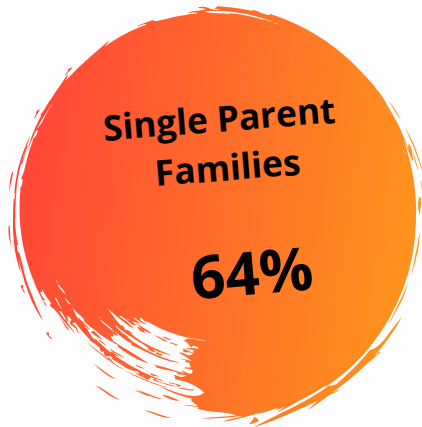
Community Demographics

		Butler	Carter	Dent	Reynolds	Ripley	Shannon	Wayne
# of Eligible Children		2570	328	865	299	609	387	549
# of Expectant Mothers		122	16	38	15	30	20	30
Race	Caucasian	90.1%	95.7%	95.5%	94.6%	96.2%	95.2%	96.0%
	Black	5.6%	0.5%	0.7%	1.2%	0.6%	0.5%	0.9%
	Other	4.3%	3.8%	3.8%	4.2%	3.2%	4.3%	3.1%
Ethnicity	Non-Hispanic	97.8%	97.1%	98.1%	98.3%	98.4%	98.0%	98.2%
	Hispanic	2.2%	2.9%	1.9%	1.7%	1.6%	2.0%	1.8%
English as primary language spoken in home		97.6%	99.6%	97.8%	98.9%	98.5%	98.9%	98.9%
Children Experiencing Homelessness		115	123	40	31	114	<i>unreported</i>	<i>unreported</i>
Children in Foster Care under 5 years old		78	5	12	9	31	7	27
Children under 5 years old with a disability		496	63	158	60	192	92	142
Unemployment Rate		2.8%	3.1%	2.8%	2.9%	3.3%	3.5%	3.2%
Child care centers (includes HS and EHS centers)		20	3	6	3	6	2	6

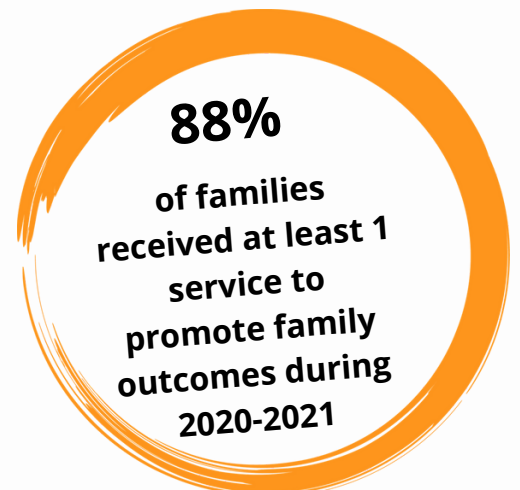
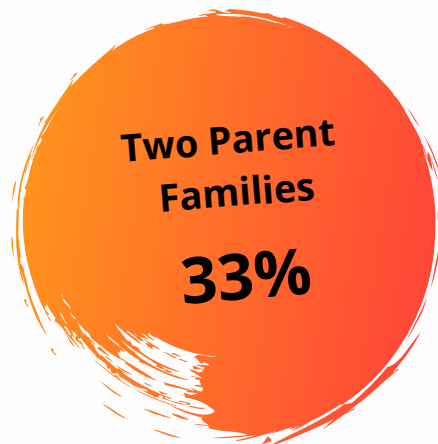
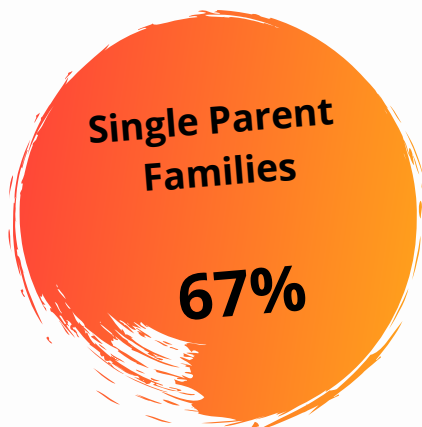


Family Demographics

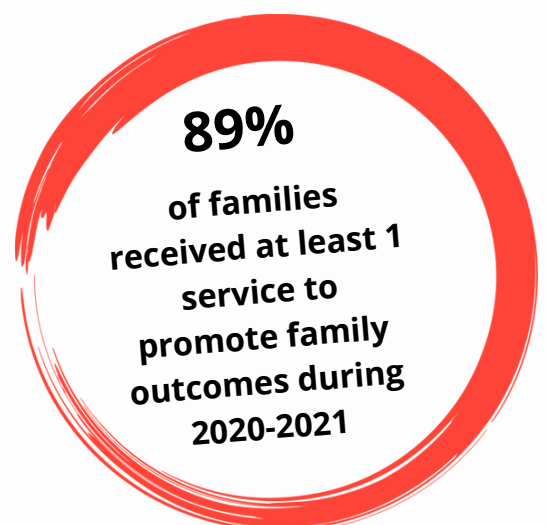
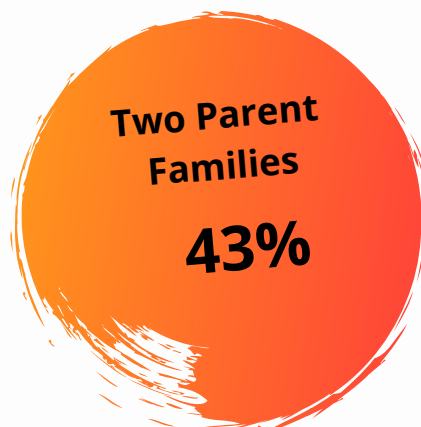
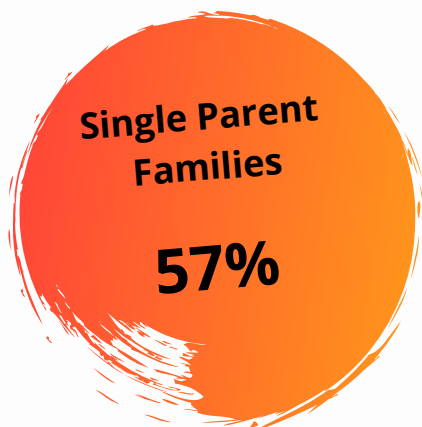
Head Start Families



Early Head Start Families



Early Head Start Expansion Families



Family & Community Engagement

Parents and family members have many opportunities to participate in their Head Start program. Parents can serve on their local parent committee, Policy Council or agency Executive Board. Parents can participate as parent volunteers on field trips, in the classroom and other areas. Parents also participate through parent-child activity plans, parent-teacher conferences, and annual open house.

Policy Council



Officers:

Christine Rojas, Chairperson; Rebecca Harvey, Vice Chairperson; Briann Snell, Secretary & Board Liaison

The Head Start Policy Council provides parents from all seven counties (13 centers) the opportunity to participate in program decision making. The council is made up of elected parent representatives and community members. Due to the COVID-19 pandemic, Policy Council meetings were held virtually each month.

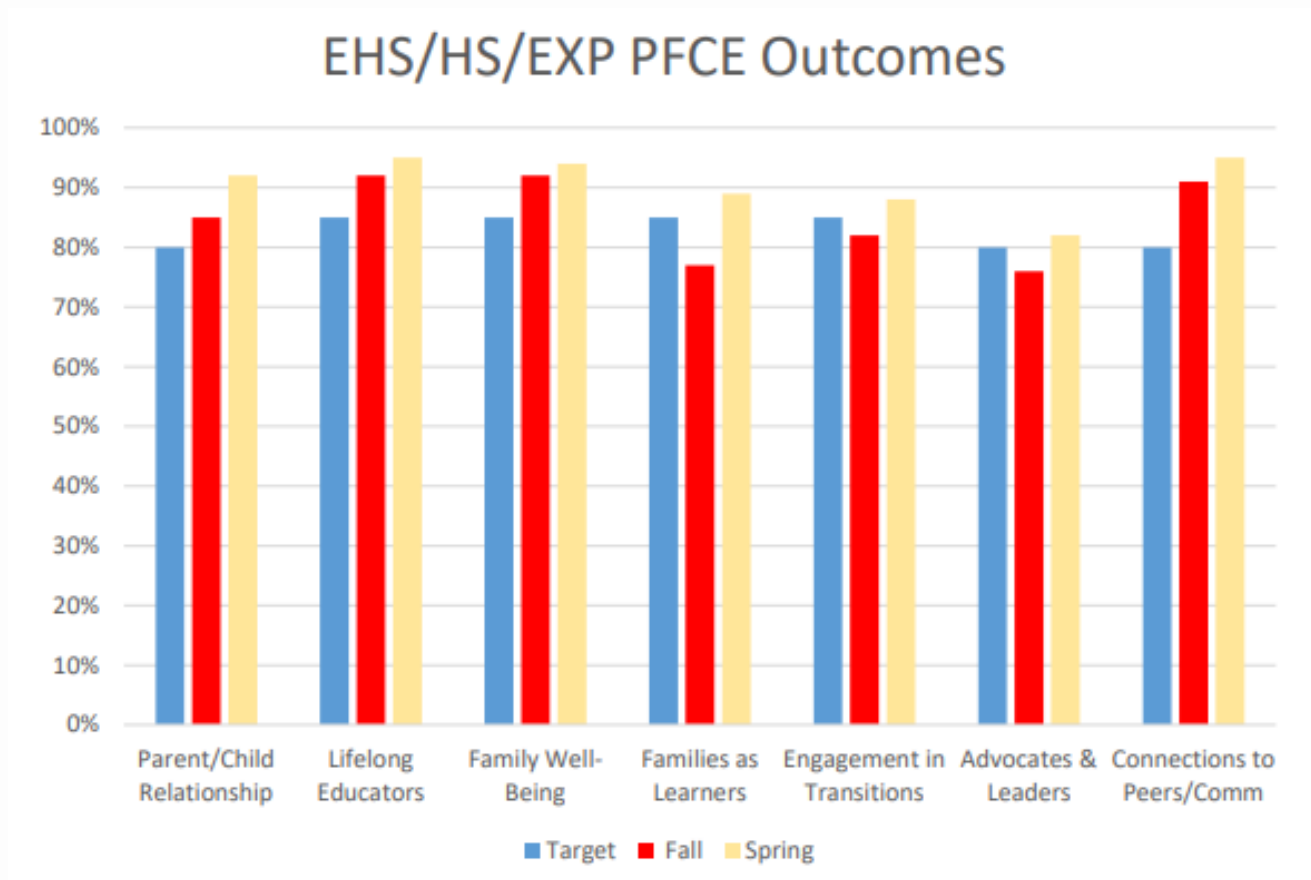
Adjustments to Services

Due to the COVID-19 pandemic, it was necessary to adjust our approach to services. The 2019-2020 school year ended with virtual services. Those virtual services continued until the end of July 2020 when EHS and one HS classroom began center services with 50% of children remaining virtual. When the rest of HS came back to school in September 2020, we opened classrooms at 75% enrollment with the other 25% remaining virtual. In January 2021, we began in-person services to 100% of enrolled children.

The pandemic caused staff and parents to think outside the box, adjust their comfort zones, and experience Head Start and Early Head Start in a new world of virtual engagement and social distancing. New COVID policies and processes were created to ensure the safety of children, families, and staff.



Family Engagement Outcomes



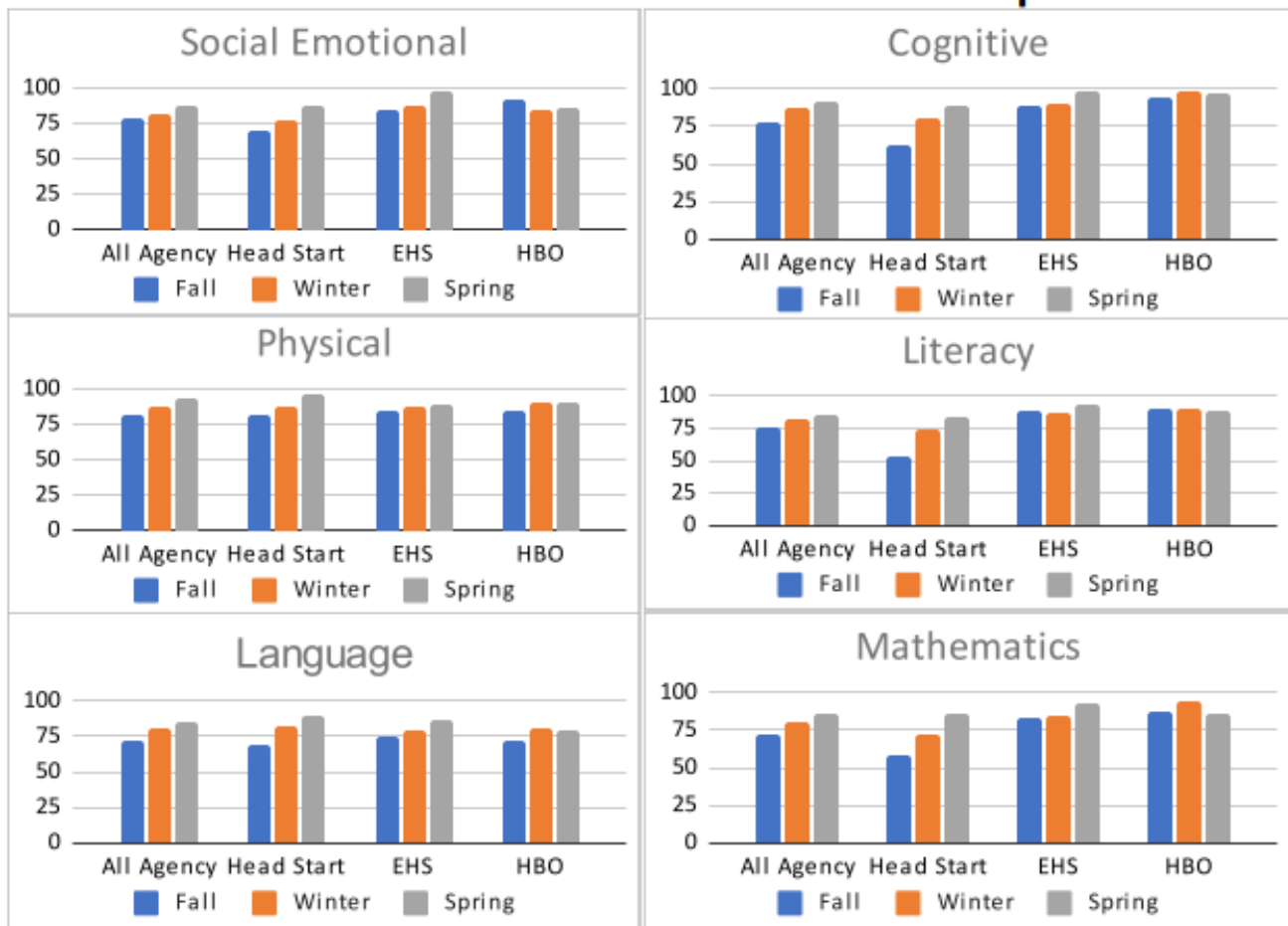
Family engagement is an interactive process through which program staff and families, family members, and their children build positive and goal-oriented relationships. It is a shared responsibility of families and professionals that requires mutual respect for the roles and strengths each has to offer.

Community engagement refers to the mutually respectful, strengths-based interactions of Head Start and Early Head Start staff and families with community members and agencies at all levels. These partnerships support parents' roles as valued community members and their progress toward their goals for themselves and their children.

Source: <https://eclkc.ohs.acf.hhs.gov/school-readiness/article/head-start-parent-family-community-engagement-framework>

There was an increase in all Family Engagement Outcomes for the EHS, HS and EHS-Expansion programs between the fall and spring. While an increase in the outcomes is usually positive, it is difficult to tell if the increase is due to referrals made to the more abundant recourses or if social distancing continues to place a strain on relationships built between Family Advocates and families causing the families to be less open about their needs and current situations.

School Readiness Outcomes



South Central Missouri Community Action Agency utilized the Teaching Strategies Gold assessment tool to conduct authentic assessments of all children. Teaching Strategies Gold is research based, reliable, valid, developmentally appropriate, strengths-based, aligned with early learning standards and integrated with The Creative Curriculum. Assessment of child learning is monitored and evaluated through the use of Teaching Strategies Gold. Information collected of children's learning is broken into domains of development, objectives and dimensions of learning, and indicators of skill level. This creates a developmental progression that allows teachers to pinpoint children's skill level for each objective. This data is collected and analyzed quarterly.

SCMCAA children who are meeting or exceeding the widely held expectations from Teaching Strategies Gold. These widely held expectations are based on the latest research in early childhood education and are used to help determine if a child's knowledge, skills, and abilities are below, meeting, or exceeding their age or class/grade's expected range of knowledge, skills, and abilities.

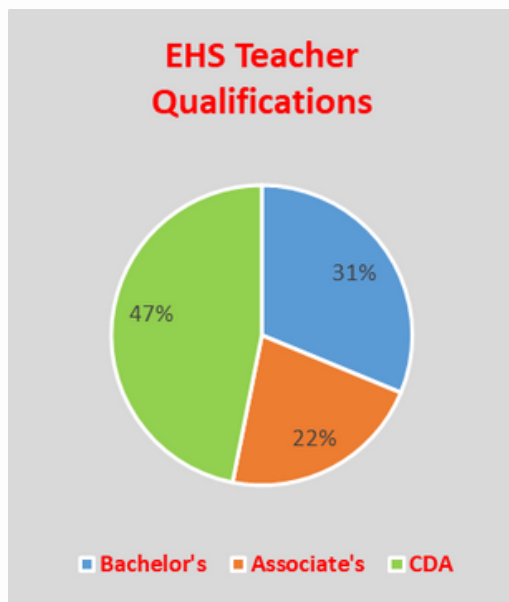
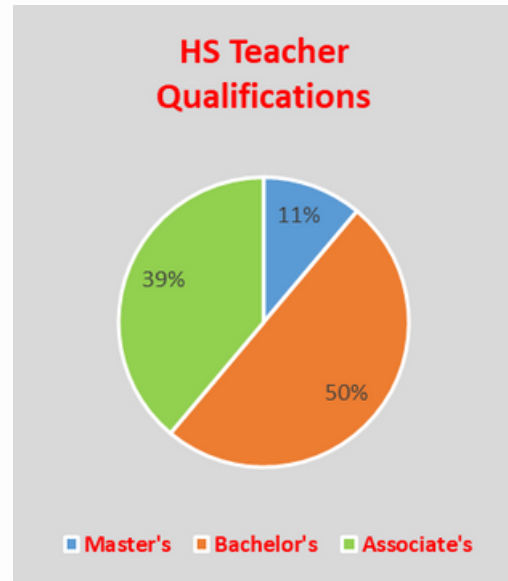
A school readiness committee meets regularly to set, review, and evaluate the school readiness goals. HSELOF, early learning standards, school expectations and the Creative Curriculum are reviewed and discussed to determine if changes are needed. These goals are also aligned with Parent Family Community Engagement outcomes.

Teaching Staff

Head Start

Teacher Qualifications

Master's Degree 11%
Bachelor's Degree 50%
Associate Degree 39%



Early Head Start

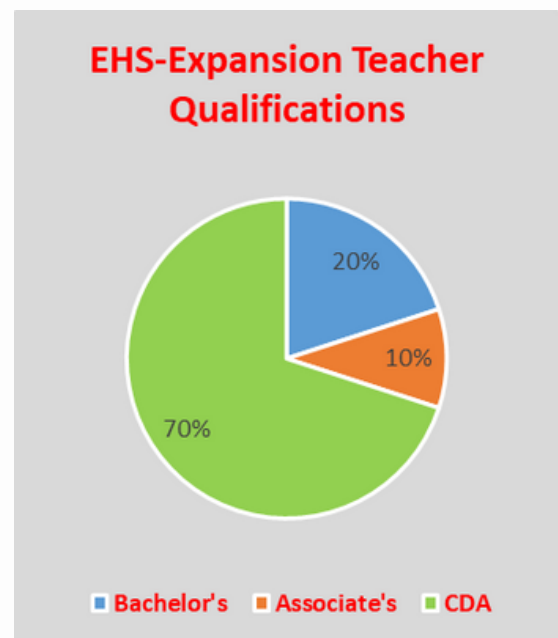
Teacher Qualifications

Bachelor's Degree 31%
Associate Degree 22%
CDA 47%

Early Head Start Expansion

Teacher Qualifications

Bachelor's Degree 20%
Associate Degree 10%
CDA 70%



Curriculum & Transitions

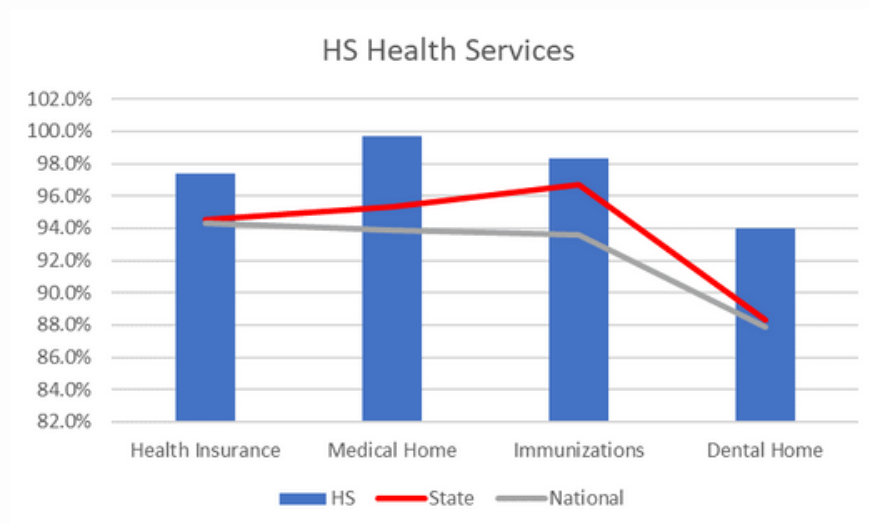
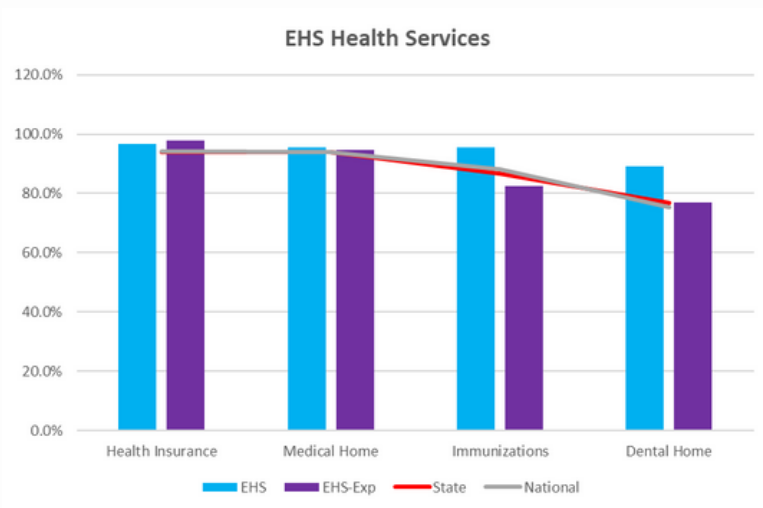
Curriculum

- Utilizing *Creative Curriculum*, SCMCAA enables our students learning experiences to be adaptive and individualized while teaching our students to be creative and confident thinkers. *Foundation* volumes help teachers create high-quality learning environments and support a deep understanding of early childhood best practices, theories, and research. *Creative Curriculum* includes developmentally appropriate goals and objectives for the children's area of interest as well as the whole child: social/emotional, physical, cognitive, language, literacy, and mathematics. The cognitive stage is associated with thinking skills. Students learn how to solve problems, ask questions and think critically. In addition, Head Start classes incorporate extended objectives and dimensions in science and technology, social studies, the arts, and English language acquisitions, if needed.
- SCMCAA has implemented *Creative Curriculum Daily Resources* for the Head Start Classrooms. *Daily Resources* give teachers more choices when it comes to implementing studies and integrating learning into every part of the day. The foundational volumes help teachers create a high-quality learning environment and build a thorough understanding of best practices linked to widely held expectations.
- The *Creative Curriculum for Infants, Toddlers & Twos* is designed to help teachers and caregivers implement developmentally appropriate practices and offer responsive daily routines and meaningful experiences that nurture learning and development. This high-quality curriculum implements and supports positive child outcomes and is aligned with the Head Start Early Learning Outcomes Framework and Missouri Early Learning Standards.
- Staff track individual and group progress to know that students are meeting widely held expectations. Detailed reports allow teachers and families to make informed decisions concerning child's individual goals and plan classroom activities.

Transitions

- Annually, the education team and site supervisors meet with local LEA's and other service providers to review MOU's and Transition Agreements. Increasing the lines of communication has developed trust and Head Start awareness.
- Fall Transition meetings express expectations for Head Start students and their families in preparing for Kindergarten. Kindergarten packets are given to the families to help prepare for the upcoming year. In the spring, Kindergarten teachers are invited to have a discussion with the Head Start families to review packets and discuss goals that will be expected before and during Kindergarten. A Head Start to Kindergarten transition form is completed for information sharing between Head Start and receiving public school.
- Children 0-24 months (Infant) are transitioned into the 24-36m (Toddler) classrooms and into Head Start with visits between teachers, children, and parents. Family Information Transition forms are completed to ensure families are aware of the transitioning process. Different routines and experiences are encouraged and documented to ensure the child has a smooth transition. When EHS children transition to Head Start, the families are invited to attend the Fall and Spring Transition meetings.

Health



Since undetected or untreated health or mental health needs can cause learning difficulties, early identification is important. SCMCAA connects families with doctors, dentists, therapists and other providers to receive age-appropriate assessments.

Health screenings are performed throughout the year. Within 45 days of the first day of attendance, children receive developmental, behavioral, vision, hearing and dental screenings or assessments. Parents are notified when screenings are completed and results are sent home.

Dental exams and treatment were a struggle in the 2020-2021 program year. Most of towns in our service area do not have dental providers or the dental providers do not accept Medicaid or other public insurance. This causes a hardship to families who do not have transportation to facilities outside the city they reside in.

Financial Accountability

2020-2021 Funds

Head Start (5/1/2020-4/30/2021)

\$3,650,234.00

Program Operations \$3,602,348.00

Training/Technical Assistance \$47,886.00

Early Head Start (5/1/2020-4/30/2021)

\$2,305,518.00

Program Operations \$2,271,353.00

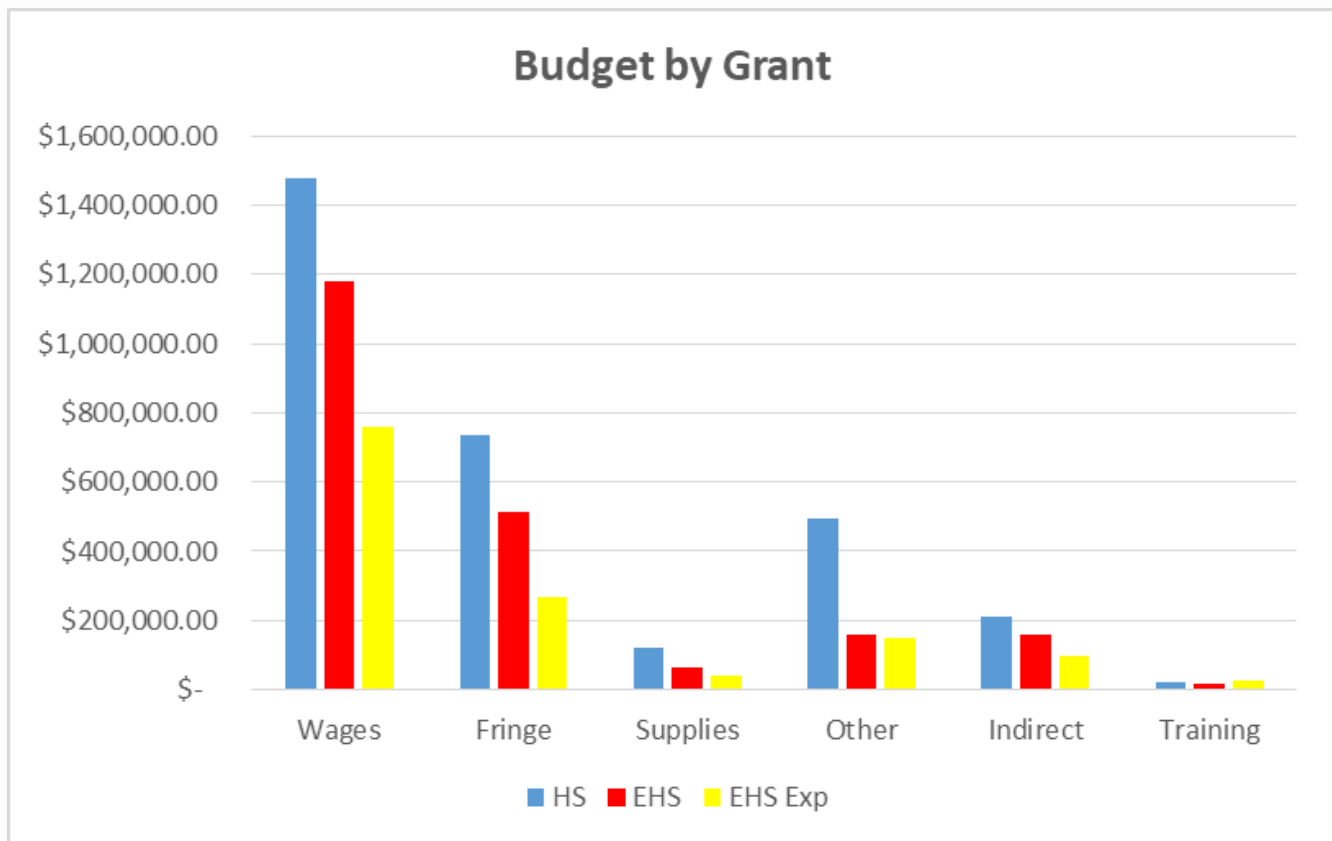
Training/Technical Assistance \$34,165.00

EHS Expansion Continuation (9/1/2021-8/31/2022)

\$1,604,663.00

Program Operations \$1,568,663.00

Training/Technical Assistance \$36,000.00



- The *Wages* budget category includes salaries for all Head Start/Early Head Start staff.
- *Fringe* includes all staff benefits such as health insurance.
- *Supplies* includes all office supplies, classroom supplies, and cleaning supplies.
- *Other* includes expenses like rent, utilities, insurance, parent services, and fuel for vehicles.
- *Indirect* is a percentage of the total grant amount for established administrative services from the grantee.

Total CACFP income for 2020-2021 was \$224,936.28.

Proposed Funding

2021-2022 Funding

Head Start	\$3,381,536.00
------------	----------------

Program Operations \$3,333,650.00

Training/Technical Assistance \$47,886.00

(5/1/2021 - 4/31/2022)

Early Head Start	\$2,645,876.00
------------------	----------------

Program Operations \$2,611,711

Training/Technical Assistance \$34,165.00

(5/1/2021 - 4/31/2022)

Early Head Start Expansion	\$1,604,663.00
----------------------------	----------------

Program Operations \$1,568,663.00

Training/Technical Assistance \$36,000.00

(9/1/2020 - 8/31/2021)

FY2019 Head Start/Early Head Start Audit

An agency wide audit was conducted by Roberts, McKenzie, Mangan & Cummings, PC, Certified Public Accountants in December 2021 for the year ended September 2021. The audit found that there were no findings or significant deficiencies for the year ended September 30, 2021.

A copy of the report can be requested by calling South Central Missouri Community Action Agency, 573-325-4255.

FA2 Monitoring Review

The virtual Focus Area 2 monitoring review was completed the week of January 19-22, 2021. It was somewhat hectic and a little scattered as it was the first virtual monitoring for the Review Team, so it was a learning process for all. The Policy Council, Governing Board, and parent interviews went well. The exit interview indicated there were no significant concerns.

The final report from the monitoring review was received on March 3, 2021. The report stated the review found the program meets the requirements of all applicable Head Start Program Performance Standards, laws, regulations, and policy requirements.

South Central Missouri Community Action Agency

Agency Locations and Services



Butler County

- **Community Services** *(Includes Weatherization, WIOA Youth Employment, LIHEAP, and SkillUP)*
- **MIECHV EHS Home Based Program**
1716 South Broadway, Poplar Bluff 63901
573-785-4727
- **Missouri Job Center** *(Includes Adult and Dislocated Worker program, WIOA Youth Employment, and SkillUP)*
1903 Northwood, Ste 2, Poplar Bluff 63901
573-840-9595
- **Head Start**
- **Early Head Start**
Karen West Center
405 Karen Drive, Poplar Bluff 63901
573-785-2372
- **Head Start**
Poplar Bluff North
1150 Herschel Bess Blvd, Poplar Bluff 63901
573-778-9411
- **Early Head Start**
Full Year Center
1140 Herschel Bess Blvd, Poplar Bluff 63901
573-778-0083
- **MIECHV EHS Home Based Program**
- **Head Start**
151-1 Park Street, Neelyville 63954
573-989-3485
- **MIECHV EHS Home Based Program**
- **Head Start**
9348 Highway 51, Broseley 63932
573-328-4141

Carter County

- **Community Services** *(Includes Weatherization, WIOA Youth Employment, WIOA Adult employment, LIHEAP, and SkillUP)*
1009 Main Street, Van Buren 63965
573-323-0270
- **Head Start**
East Carter County Head Start
63 North Herren, Ellsinore 63937
573-322-0099
- **Early Head Start**
1810 Winston, Van Buren 63965
573-323-8905

Dent County

- **Community Services** *(Includes Weatherization, LIHEAP, and SkillUP)*
- **Head Start**
- **Early Head Start**
1405 S Wines, Salem 65560
573-729-3500

Reynolds County

- **Community Services** *(Includes Weatherization, WIOA Youth Employment, WIOA Adult employment, LIHEAP, and SkillUP)*
145 West Maple, Ellington 63638
573-663-2855
- **Head Start**
145 West Maple, Ellington 63638
573-663-3199
- **Early Head Start**
165 West Maple, Ellington 63638
573-663-2377

Ripley County

- **Community Services** *(Includes Weatherization, WIOA Youth Employment, WIOA Adult employment, LIHEAP, and SkillUP)*
- **MIECHV EHS Home Based Program**
- **Head Start**
- **Early Head Start**
Rt 2 Box 16, Doniphan 63935
573-996-7631, 573-996-5059

Shannon County

- **Community Services** *(Includes Weatherization, WIOA Youth Employment, WIOA Adult employment, LIHEAP, and SkillUP)*
- **Head Start**
- **Early Head Start**
8120 Highway 19, Winona 65588
573-325-8271, 573-325-8272

Wayne County

- **Community Services** *(Includes Weatherization, WIOA Youth Employment, WIOA Adult employment, LIHEAP, and SkillUP)*
209 North Main Street, Piedmont 63957
573-223-7495
- **Head Start**
- **Early Head Start**
209 North Main Street, Piedmont 63957
573-223-7156